

# GRIPSAFE<sup>®</sup> ST

## INBOARD INSERTION BLOCKING (IIB) REVERSE PRESSURE TEST PLUG

4" TO 24"\*\*\*

\*\*Larger sizes available  
upon request

### SUPERIOR TECHNOLOGY

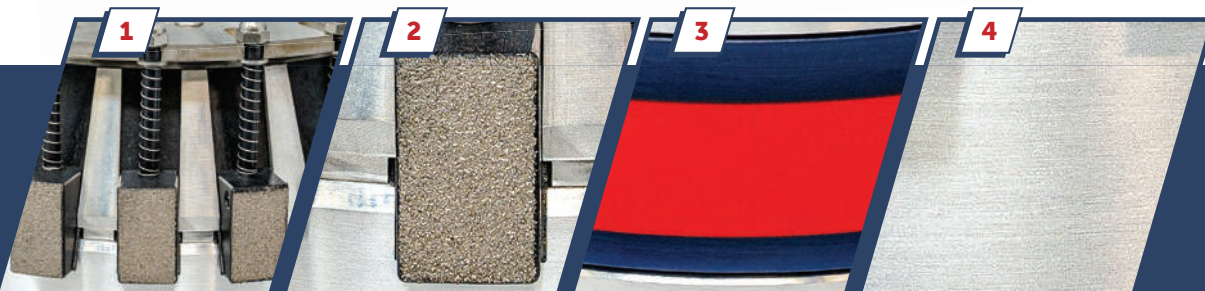
includes:

- 1** An Independently Actuating Wedge System
- 2** Gripping Wedges with Gritlock<sup>®</sup> Wedge Surface Coating
- 3** Tri-Ply<sup>®</sup> Seals
- 4** Aviation Grade Aluminum Alloy Body Construction



3/4" TO 4"\*

\*4" Schedules 120, 160 and XXH



LOCAL (713) 941-3797 TOLL-FREE (800) 456-8721  
[www.USAIndustries.com/GripSafe](http://www.USAIndustries.com/GripSafe)

For GripSafe ST patent and trademark information, go to: <https://www.usaindustries.com/gripsafe-patents-trademarks/>



# INBOARD INSERTION BLOCKING (IIB) REVERSE PRESSURE TEST PLUG 3/4" TO 24"\*

After more than half a century of various industries using the same basic technology, with known incidents of plug ejections, a major advancement in piping isolation and test plugs has been long overdue. GripSafe ST plugs are the result of a fundamental rethinking of traditional plug designs. With its new, patented independent wedge gripping system, GripSafe ST provides maximum holding capabilities while lowering risks to personnel and equipment - making it the safest and most reliable plug in the world.

## SAFETY & RELIABILITY

**Security.** With its unprecedented patented design, GripSafe ST's independent self-gripping technology virtually eliminates the risk of plug movement downstream upon installation.

**Superior Self Gripping.** The innovative system distributes equal loading across the gripping wedges ensuring maximum surface contact and holding capabilities. As pressure increases in front of the plug, the wedges grip tighter. Even in pipe diameters that are asymmetrical, each wedge independently adapts to variances within the pipe. GripSafe ST takes "self-gripping" to a new level.

**No Pipe Surface Damage.** Unlike competitive products which rely on serrated jaws to bite into the pipe for holding purposes, GripSafe ST uses a specially designed wedge system that grips the pipe without scarring the surface. GripSafe ST eliminates the need for a segment of sacrificial pipe, or the cleanup necessary to remove surface deformations other tools create.

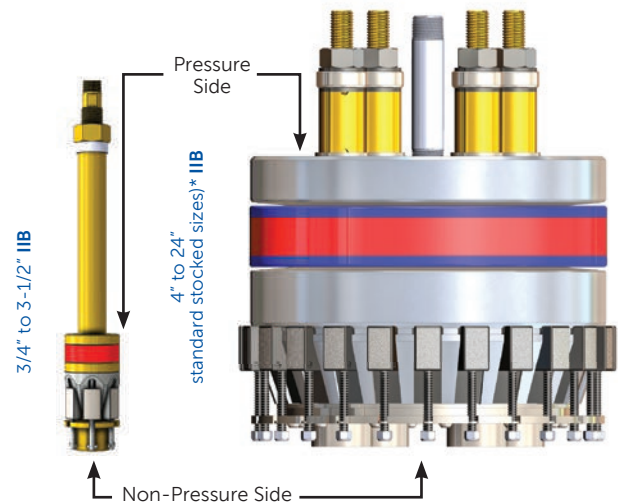
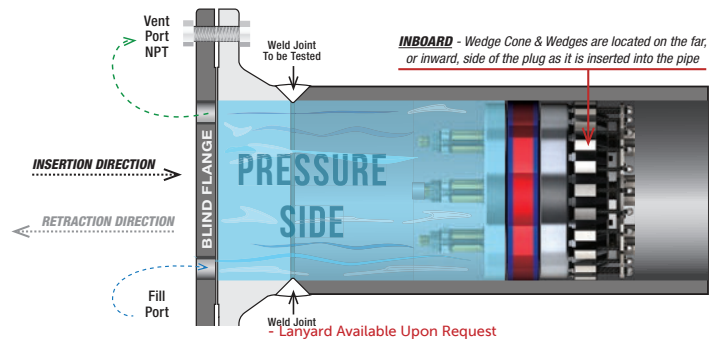
**Non-Contaminating.** GripSafe ST plugs utilize a proprietary texture on the gripping wedges that can be used on any metal type with no carbon contamination. Therefore, in contrast with other plugs, GripSafe ST requires no alternate parts for use in stainless and other alloy pipes where cross contamination is a concern.

**Less Weight.** GripSafe ST plugs weigh less on average than competitive products. Significant weight differences exist as plug sizes increase, reaching upwards of 50% weight reductions in larger sizes without sacrificing holding capabilities.

## APPLICATIONS

**Flange Weld Testing.** Used in conjunction with a ported blind flange, GripSafe ST IIB plugs stress the weld joint in longitudinal (axial), circumferential (hoop) and radial pressures identical to the stresses that would be induced when hydro-testing the entire piping system, making them superior to traditional flange test plugs (FTPs) which apply hoop and radial stresses only.

**Pressure Vessels.** Block outlet piping in vessels to pressurize for cleaning or testing purposes.



\* Larger sizes and custom configurations available upon request  
Note: For 4" NPS, Pipe Schedules 120, 160, and XXH require the smaller plug configuration.

For more information on USA Industries' products, contact us at (713) 941-3797 or go to [www.USAIindustries.com](http://www.USAIindustries.com)

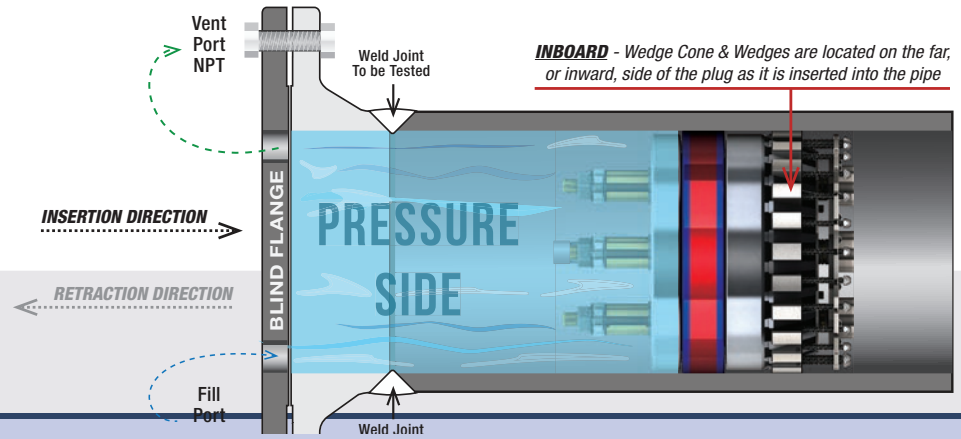
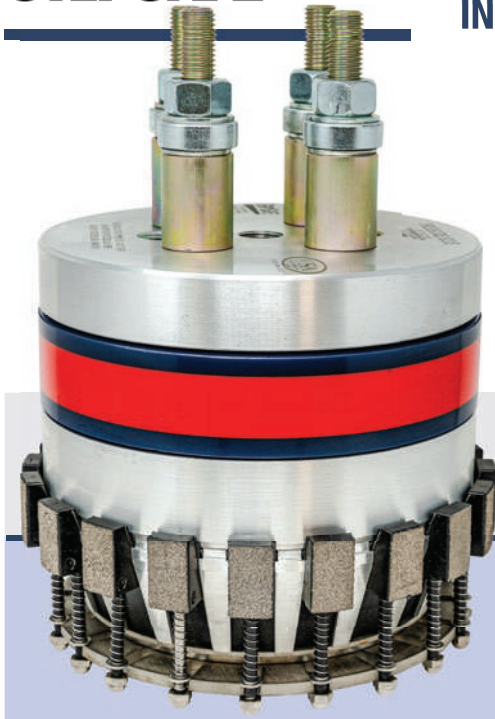
## GRIPSAFE® ST INNOVATION

Manufactured exclusively by USA Industries, an ISO 9001:2015 certified company

For patent and trademark information go to:  
<https://usaindustries.com/gripsafe-patents-trademarks/>

## TOOL APPLICATION ILLUSTRATIONS

### INBOARD INSERTION BLOCKING (IIB) REVERSE PRESSURE



#### IIB APPLICATIONS:

- FLANGE WELD TESTING
- PRESSURE VESSELS

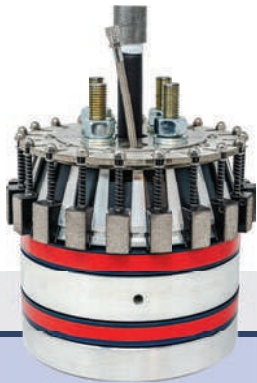
### ALSO AVAILABLE



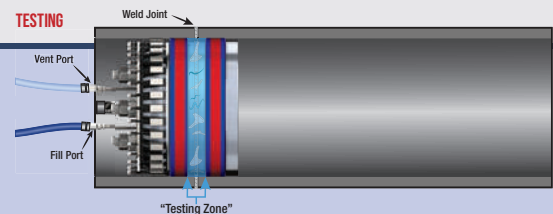
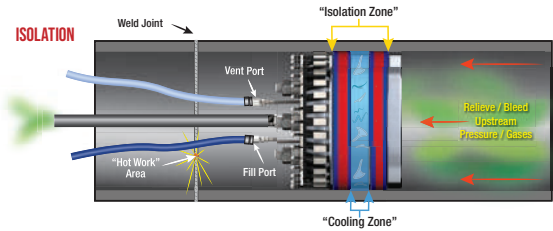
### OUTBOARD RETRACTION BLOCKING (ORB)



- ORB APPLICATIONS: • PIPE TESTING • PIPESPOOL TESTING • ISOLATION • LINE PURGING



### DOUBLE BLOCK & BLEED (DBB)



#### DBB APPLICATIONS:

- FLANGE WELD TESTING
- PRE/POST WELD OPERATIONS
- ISOLATION
- POSITIVE ISOLATION MONITORING
- LINE PURGING



# INBOARD INSERTION BLOCKING (IIB) REVERSE PRESSURE TEST PLUG

3/4" TO 4"\* SPECIFICATIONS & RATINGS



Nominal Pipe Size (in)	Schedule	Part Number	Tool Diameter (in)	Rec. ID Range* (in)	Nominal Pipe ID Clearance (in)	Approx. Tool Weight (lbs)	Tool Length (in)	Torque Range (ft-lbs)		Compr Hex Nut Socket Size (in)	Backup Wrench Size (in)	Back Pressure Vent Thread	Test Pressure Rating (PSI)*
								Norm	Max.				
3/4	40,STD,40S	GSST-I-R-0075-040	0.79	0.80 - 0.87	0.035	0.6	8.69	2.9	4.5	1/2	1/4 Open End	1/4 MNPT	10000
	80,XS,80S	GSST-I-R-0075-080	0.71	0.72 - 0.79	0.035	0.6	8.69	2.2	3.5	1/2	1/4 Open End	1/4 MNPT	10000
1	10	GSST-I-R-0100-010	1.04	1.06 - 1.16	0.055	0.8	9.19	6.3	9.7	9/16	1/4 Open End	1/16 MNPT	10000
	40,STD,40S	GSST-I-R-0100-040	0.99	1.02 - 1.11	0.055	0.8	9.19	5.6	8.7	9/16	1/4 Open End	1/16 MNPT	10000
	80,XS,80S	GSST-I-R-0100-080	0.90	0.92 - 1.02	0.055	0.8	9.19	4.5	6.9	9/16	1/4 Open End	1/16 MNPT	10000
	160	GSST-I-R-0100-160	0.78	0.79 - 0.85	0.035	0.6	8.69	2.8	4.4	1/2	1/4 Open End	1/4 MNPT	10000
1-1/4	10	GSST-I-R-0125-010	1.38	1.39 - 1.54	0.068	1.9	12.19	15	23	3/4	3/8 Open End	1/8 MNPT	10000
	40,STD,40S	GSST-I-R-0125-040	1.31	1.33 - 1.48	0.068	1.9	12.19	13	20	3/4	3/8 Open End	1/8 MNPT	10000
	80,XS,80S	GSST-I-R-0125-080	1.21	1.23 - 1.38	0.065	1.8	12.19	11	17	3/4	3/8 Open End	1/8 MNPT	10000
	160	GSST-I-R-0125-160	1.11	1.12 - 1.22	0.055	0.9	9.19	7.2	11	9/16	1/4 Open End	1/16 MNPT	10000
	XX	GSST-I-R-0125-XXH	0.86	0.87 - 0.94	0.045	0.6	8.69	3.5	5.5	1/2	1/4 Open End	1/4 MNPT	10000
1-1/2	10	GSST-I-R-0150-010	1.60	1.64 - 1.80	0.085	2.4	12.63	24	37	15/16	7/16 Open End	1/4 MNPT	10000
	40,STD,40S	GSST-I-R-0150-040	1.53	1.56 - 1.73	0.085	2.3	12.63	21	33	15/16	7/16 Open End	1/4 MNPT	10000
	80,XS,80S	GSST-I-R-0150-080	1.42	1.45 - 1.62	0.085	2.1	12.63	18	28	15/16	7/16 Open End	1/4 MNPT	10000
	160	GSST-I-R-0150-160	1.27	1.30 - 1.44	0.068	1.8	12.19	12	19	3/4	3/8 Open End	1/8 MNPT	10000
	XX	GSST-I-R-0150-XXH	1.05	1.08 - 1.16	0.055	0.8	9.19	6.3	9.8	9/16	1/4 Open End	1/16 MNPT	10000
2	10	GSST-I-R-0200-010	2.03	2.05 - 2.28	0.130	4.0	13.63	47	75	1-1/8	9/16 Open End	3/8 MNPT	10000
	40,STD,40S	GSST-I-R-0200-040	1.94	1.97 - 2.19	0.130	3.8	13.63	42	65	1-1/8	9/16 Open End	3/8 MNPT	10000
	80,XS,80S	GSST-I-R-0200-080	1.81	1.84 - 2.06	0.130	3.5	13.63	36	55	1-1/8	9/16 Open End	3/8 MNPT	10000
	160	GSST-I-R-0200-160	1.60	1.64 - 1.80	0.085	2.4	12.63	24	37	15/16	7/16 Open End	1/4 MNPT	10000
	XX	GSST-I-R-0200-XXH	1.42	1.45 - 1.62	0.085	2.2	12.63	18	28	15/16	7/16 Open End	1/4 MNPT	10000
2-1/2	10	GSST-I-R-0250-010	2.51	2.57 - 2.77	0.125	7.2	15.38	85	135	1-5/16	9/16 Open End	3/8 MNPT	8000
	40,STD,40S	GSST-I-R-0250-040	2.34	2.38 - 2.61	0.125	6.6	15.38	75	115	1-5/16	9/16 Open End	3/8 MNPT	8000
	80,XS,80S	GSST-I-R-0250-080	2.20	2.24 - 2.46	0.125	6.2	15.38	65	100	1-5/16	9/16 Open End	3/8 MNPT	8000
	160	GSST-I-R-0250-160	2.00	2.06 - 2.25	0.125	3.9	13.63	46	70	1-1/8	9/16 Open End	3/8 MNPT	10000
	XX	GSST-I-R-0250-XXH	1.69	1.74 - 1.89	0.085	2.5	12.63	27	42	15/16	7/16 Open End	1/4 MNPT	10000
3	10	GSST-I-R-0300-010	3.07	3.10 - 3.44	0.193	9.1	15.38	150	230	1-1/2	3/4 Box End	1/4 FNPT	8000
	40,STD,40S	GSST-I-R-0300-040	2.88	2.92 - 3.25	0.193	9.7	15.38	130	200	1-1/2	3/4 Box End	1/4 FNPT	8000
	80,XS,80S	GSST-I-R-0300-080	2.71	2.75 - 3.09	0.190	9.0	15.38	110	175	1-1/2	3/4 Box End	1/4 FNPT	8000
	160	GSST-I-R-0300-160	2.50	2.56 - 2.76	0.125	6.1	15.38	85	130	1-5/16	9/16 Open End	3/8 MNPT	8000
	XX	GSST-I-R-0300-XXH	2.18	2.24 - 2.42	0.125	6.1	13.63	55	85	1-1/8	9/16 Open End	3/8 MNPT	8000
3-1/2	10	GSST-I-R-0350-010	3.56	3.61 - 3.96	0.204	11.1	15.38	225	350	1-11/16	7/8 Box End	3/8 FNPT	6000
	40,STD,40S	GSST-I-R-0350-040	3.34	3.39 - 3.75	0.204	13.4	15.38	195	305	1-11/16	7/8 Box End	3/8 FNPT	6000
	80,XS,80S	GSST-I-R-0350-080	3.16	3.21 - 3.56	0.208	12.3	15.38	175	270	1-11/16	7/8 Box End	3/8 FNPT	6000
	XX	GSST-I-R-0350-XXH	2.60	2.66 - 2.86	0.125	7.5	15.38	95	145	1-5/16	9/16 Open End	3/8 MNPT	8000
4	120	GSST-I-R-0400-120	3.42	3.52 - 3.83	0.205	10.5	15.38	205	320	1-11/16	7/8 Box End	3/8 FNPT	6000
	160	GSST-I-R-0400-160	3.23	3.33 - 3.64	0.205	9.7	15.38	185	285	1-11/16	7/8 Box End	3/8 FNPT	6000
	XX	GSST-I-R-0400-XXH	2.96	2.99 - 3.34	0.193	8.6	15.38	135	215	1-1/2	3/4 Box End	1/4 FNPT	8000

\* Larger sizes and custom configurations available upon request. • NPS 6-24 TOOL OD MUST BE WITHIN 1/8" CONCENTRICITY TO THE PIPE ID.

(P-XXXX) - When testing in ANSI A106 Grade B pipe material, a Pipe Reinforcement Device (PRD) is required if the test pressure will exceed the number identified after the "P-". If the material is not A106 B, consult USA Industries engineering team for more information.  
In general, a PRD is strongly recommended for all pipes 10/10S and thinner walled.

• NEVER EXCEED THE MAXIMUM RATED PRESSURE OF THE LOWEST RATED COMPONENT IN THE SYSTEM.

• DATA IS SUBJECT TO CHANGE. Consult manufacturer to verify that this document is the latest release.

For more information on USA Industries' products, contact us at (713) 941-3797 or go to [www.USAIindustries.com](http://www.USAIindustries.com)





# INBOARD INSERTION BLOCKING (IIB) REVERSE PRESSURE TEST PLUG 4" TO 14"\* SPECIFICATIONS & RATINGS



Nominal Pipe Size (in)	Schedule	Part Number	Tool Diameter (in)	Rec. ID Range* (in)	Nominal Pipe ID Clearance (in)	Approx. Tool Weight (lbs)	Tool Length (in)	Torque Range (ft-lbs)		Comp. Hex Nut Socket Size (in)	Back Pressure Vent Thread	Test Pressure Rating (PSI)*
								Norm	Max.			
4	10,10S	GS-I-R-0400-010	4.04	4.10 - 4.54	0.22	21	13.94	120	250	1-5/16	1/4 FNPT	4875
	40,STD,40S	GS-I-R-0400-040	3.81	3.87 - 4.31	0.22	19	13.94	120	250	1-5/16	1/4 FNPT	5450
	80,XS,80S	GS-I-R-0400-080	3.61	3.67 - 4.11	0.22	17	13.94	120	250	1-5/16	1/4 FNPT	6050
6	10,10S	GS-I-R-0600-010	5.98	6.04 - 6.42	0.375	34	16.42	85	130	1-1/16	1/4 MNPT	850
	40,STD,40S	GS-I-R-0600-040	5.69	5.75 - 6.13	0.375	32	16.42	75	110	1-1/16	1/4 MNPT	2370
	80,XS,80S	GS-I-R-0600-080	5.39	5.45 - 5.82	0.375	29	16.42	60	95	1-1/16	1/4 MNPT	4000
	120	GS-I-R-0600-120	5.13	5.19 - 5.56	0.375	27	16.42	55	80	1-1/16	1/4 MNPT	3900
	160	GS-I-R-0600-160	4.81	4.87 - 5.25	0.375	25	16.42	40	60	3/4	1/4 MNPT	3850
	XX	GS-I-R-0600-XXH	4.52	4.58 - 4.96	0.375	23	16.42	35	55	3/4	1/4 MNPT	3700
8	10,10S	GS-I-R-0800-010	7.95	8.02 - 8.40	0.375	61	16.28	120	150	1-1/4	1/2 MNPT	575
	20	GS-I-R-0800-020	7.75	7.81 - 8.20	0.375	59	16.28	120	150	1-1/4	1/2 MNPT	1125
	30	GS-I-R-0800-030	7.70	7.76 - 8.15	0.375	58	16.28	120	150	1-1/4	1/2 MNPT	1300
	40,STD,40S	GS-I-R-0800-040	7.61	7.67 - 8.05	0.375	56	16.28	120	150	1-1/4	1/2 MNPT	1575
	60	GS-I-R-0800-060	7.44	7.50 - 7.89	0.375	55	16.28	120	150	1-1/4	1/2 MNPT	2175
	80,XS,80S	GS-I-R-0800-080	7.25	7.31 - 7.70	0.375	53	16.28	120	150	1-1/4	1/2 MNPT	3250
	100	GS-I-R-0800-100	7.06	7.12 - 7.51	0.375	50	16.28	100	150	1-1/4	1/2 MNPT	3860
	120	GS-I-R-0800-120	6.81	6.87 - 7.26	0.375	48	16.28	100	150	1-1/4	1/2 MNPT	3725
	140	GS-I-R-0800-140	6.63	6.69 - 7.07	0.375	46	16.28	90	150	1-1/16	1/4 MNPT	3925
	160	GS-I-R-0800-160	6.44	6.50 - 6.88	0.375	44	16.28	90	150	1-1/16	1/4 MNPT	3825
	XX	GS-I-R-0800-XXH	6.50	6.56 - 6.94	0.375	44	16.28	90	150	1-1/16	1/4 MNPT	3750
10	10,10S	GSST-I-R-1000-010	10.05	10.11 - 10.85	0.375	75	16.02	120	270	1-1/4	3/4 MNPT	4200
	20	GSST-I-R-1000-020	9.88	9.94 - 10.68	0.375	72	16.02	120	270	1-1/4	3/4 MNPT	4500
	30	GSST-I-R-1000-030	9.76	9.82 - 10.56	0.375	71	16.02	120	270	1-1/4	3/4 MNPT	4800
	40,4STD,40s	GSST-I-R-1000-040	9.65	9.71 - 10.45	0.375	69	16.02	120	270	1-1/4	3/4 MNPT	5000
	60,XS,80S	GSST-I-R-1000-08S	9.38	9.44 - 10.18	0.375	66	16.02	120	270	1-1/4	3/4 MNPT	5975
	80	GSST-I-R-1000-080	9.19	9.25 - 9.99	0.375	63	16.02	120	200	1-1/4	3/4 MNPT	5700
	100	GSST-I-R-1000-100	8.94	9.00 - 9.74	0.375	58	16.02	120	195	1-1/4	3/8 MNPT	6000
	120	GSST-I-R-1000-120	8.69	8.75 - 9.49	0.375	56	16.02	120	185	1-1/4	3/8 MNPT	5775
	140,XX	GSST-I-R-1000-140	8.38	8.44 - 9.18	0.375	54	16.02	120	180	1-1/4	3/8 MNPT	5575
160	GSST-I-R-1000-160	8.13	8.19 - 8.93	0.375	53	16.02	120	175	1-1/4	3/8 MNPT	5925	
12	10,10S	GSST-I-R-1200-010	12.02	12.08 - 12.82	0.375	140	16.02	120	180	1-1/4	3/4 MNPT	5500
	20	GSST-I-R-1200-020	11.88	11.94 - 12.68	0.375	137	16.02	120	175	1-1/4	3/4 MNPT	5625
	30	GSST-I-R-1200-030	11.72	11.78 - 12.52	0.375	133	16.02	120	175	1-1/4	3/4 MNPT	5475
	STD,40S	GSST-I-R-1200-04S	11.63	11.69 - 12.43	0.375	131	16.02	120	250	1-1/4	3/4 MNPT	4550
	40	GSST-I-R-1200-040	11.56	11.63 - 12.36	0.375	129	16.02	120	245	1-1/4	3/4 MNPT	4700
	XS,80S	GSST-I-R-1200-08S	11.38	11.44 - 12.18	0.375	126	16.02	120	225	1-1/4	3/4 MNPT	5175
	60	GSST-I-R-1200-060	11.25	11.31 - 12.05	0.375	97	16.02	120	165	1-1/4	3/4 MNPT	5575
	80	GSST-I-R-1200-080	11.00	11.06 - 11.80	0.375	93	16.02	120	160	1-1/4	3/4 MNPT	5825
	100	GSST-I-R-1200-100	10.69	10.75 - 11.49	0.375	89	16.02	120	235	1-1/4	3/4 MNPT	5775
	120,XX	GSST-I-R-1200-120	10.38	10.44 - 11.18	0.375	87	16.02	120	230	1-1/4	3/4 MNPT	5700
	140	GSST-I-R-1200-140	10.13	10.19 - 10.93	0.375	85	16.02	120	220	1-1/4	3/4 MNPT	5550
160	GSST-I-R-1200-160	9.75	9.81 - 10.55	0.375	81	16.02	120	215	1-1/4	3/4 MNPT	5975	
14	10S	GSST-I-R-1400-01S	13.25	13.31 - 14.05	0.375	182	17.75	120	200	1-1/4	1 MNPT	6250
	10	GSST-I-R-1400-010	13.13	13.19 - 13.93	0.375	179	17.75	120	195	1-1/4	1 MNPT	6350
	20	GSST-I-R-1400-020	13.00	13.06 - 13.80	0.375	176	17.75	120	195	1-1/4	1 MNPT	6475
	30,STD,40S	GSST-I-R-1400-04S	12.88	12.94 - 13.68	0.375	170	17.75	120	205	1-1/4	1 MNPT	6175
	40	GSST-I-R-1400-040	12.75	12.81 - 13.55	0.375	169	17.75	120	195	1-1/4	1 MNPT	6275
	XS,80S	GSST-I-R-1400-08S	12.63	12.69 - 13.43	0.375	166	17.75	120	180	1-1/4	1 MNPT	6400
	60	GSST-I-R-1400-060	12.44	12.50 - 13.24	0.375	148	16.02	120	185	1-1/4	3/4 MNPT	5425
	80	GSST-I-R-1400-080	12.13	12.19 - 12.93	0.375	142	16.02	120	180	1-1/4	3/4 MNPT	5400
	100	GSST-I-R-1400-100	11.75	11.81 - 12.55	0.375	134	16.02	120	175	1-1/4	3/4 MNPT	5425
	120	GSST-I-R-1400-120	11.44	11.50 - 12.24	0.375	130	16.02	120	170	1-1/4	3/4 MNPT	5725
	140	GSST-I-R-1400-140	11.13	11.19 - 11.93	0.375	124	16.02	120	165	1-1/4	3/4 MNPT	5700
160	GSST-I-R-1400-160	10.81	10.88 - 11.61	0.375	118	16.02	120	160	1-1/4	3/4 MNPT	5650	

\* Larger sizes and custom configurations available upon request. • NPS 6-24 TOOL OD MUST BE WITHIN 1/8" CONCENTRICITY TO THE PIPE ID.

(P-XXXX) - When testing in ANSI A106 Grade B pipe material, a Pipe Reinforcement Device (PRD) is required if the test pressure will exceed the number identified after the "P-". If the material is not A106 B, consult USA Industries engineering team for more information.  
In general, a PRD is strongly recommended for all pipes 10/10S and thinner walled.

• NEVER EXCEED THE MAXIMUM RATED PRESSURE OF THE LOWEST RATED COMPONENT IN THE SYSTEM.

• DATA IS SUBJECT TO CHANGE. Consult manufacturer to verify that this document is the latest release.

For more information on USA Industries' products, contact us at (713) 941-3797 or go to [www.USAIndustries.com](http://www.USAIndustries.com)





# INBOARD INSERTION BLOCKING (IIB) REVERSE PRESSURE TEST PLUG

## 16" TO 24"\* SPECIFICATIONS & RATINGS



Nominal Pipe Size (in)	Schedule	Part Number	Tool Diameter (in)	Rec. ID Range* (in)	Nominal Pipe ID Clearance (in)	Approx. Tool Weight (lbs)	Tool Length (in)	Torque Range (ft-lbs)		Comp. Hex Nut Socket Size (in)	Back Pressure Vent Thread	Test Pressure Rating (PSI)*
								Norm	Max.			
16	10S	GSST-I-R-1600-01S	15.25	15.31 - 16.05	0.375	252	18.06	120	310	1-5/8	1 MNPT	6000
	10	GSST-I-R-1600-010	15.13	15.19 - 15.93	0.375	249	18.06	120	305	1-5/8	1 MNPT	6100
	20	GSST-I-R-1600-020	15.00	15.06 - 15.80	0.375	246	18.06	120	300	1-5/8	1 MNPT	6200
	30,STD,40S	GSST-I-R-1600-04S	14.88	14.94 - 15.68	0.375	240	18.07	120	320	1-5/8	1 MNPT	5700
	40,XS,80S	GSST-I-R-1600-08S	14.63	14.69 - 15.43	0.375	234	18.07	120	280	1-5/8	1 MNPT	6175
	60	GSST-I-R-1600-060	14.31	14.38 - 15.11	0.375	225	18.07	120	285	1-5/8	1 MNPT	6075
	80	GSST-I-R-1600-080	13.94	14.00 - 14.74	0.375	190	16.33	120	270	1-5/8	3/4 MNPT	4975
	100	GSST-I-R-1600-100	13.56	13.63 - 14.36	0.375	191	16.33	120	270	1-5/8	3/4 MNPT	5050
	120	GSST-I-R-1600-120	13.19	13.25 - 13.99	0.375	183	16.33	120	265	1-5/8	3/4 MNPT	5350
	140	GSST-I-R-1600-140	12.75	12.81 - 13.55	0.375	154	16.02	120	190	1-1/4	3/4 MNPT	5175
160	GSST-I-R-1600-160	12.44	12.50 - 13.24	0.375	150	16.02	120	185	1-1/4	3/4 MNPT	5425	
18	10S	GSST-I-R-1800-01S	17.25	17.31 - 18.05	0.375	351	19.08	120	430	1-5/8	1 MNPT	4175
	10	GSST-I-R-1800-010	17.13	17.19 - 17.93	0.375	347	19.08	120	430	1-5/8	1 MNPT	4200
	20	GSST-I-R-1800-020	17.00	17.06 - 17.80	0.375	344	19.08	120	425	1-5/8	1 MNPT	4250
	STD,40S	GSST-I-R-1800-04S	16.88	16.94 - 17.68	0.375	335	19.33	120	485	1-5/8	1 MNPT	3550
	30	GSST-I-R-1800-030	16.75	16.81 - 17.55	0.375	331	19.33	120	465	1-5/8	1 MNPT	3750
	XS,80S	GSST-I-R-1800-08S	16.63	16.69 - 17.43	0.375	328	19.33	120	440	1-5/8	1 MNPT	4000
	40	GSST-I-R-1800-040	16.50	16.56 - 17.30	0.375	288	18.07	120	410	1-5/8	1 MNPT	4350
	60	GSST-I-R-1800-060	16.13	16.19 - 16.93	0.375	267	18.07	120	400	1-5/8	1 MNPT	4450
	80	GSST-I-R-1800-080	15.75	15.81 - 16.55	0.375	266	18.07	120	390	1-5/8	1 MNPT	4525
	100	GSST-I-R-1800-100	15.31	15.38 - 16.11	0.375	234	17.10	120	380	1-5/8	1 MNPT	4650
	120	GSST-I-R-1800-120	14.88	14.94 - 15.68	0.375	215	17.22	120	370	1-5/8	1 MNPT	4900
140	GSST-I-R-1800-140	14.50	14.56 - 15.30	0.375	211	17.35	120	360	1-5/8	1 MNPT	5075	
160	GSST-I-R-1800-160	14.06	14.13 - 14.86	0.375	201	17.47	120	345	1-5/8	1 MNPT	5150	
20	10S	GSST-I-R-2000-01S	19.19	19.25 - 19.99	0.375	438	19.56	120	365	1-5/8	1-1/2 MNPT	5000
	10	GSST-I-R-2000-010	19.13	19.19 - 19.93	0.375	436	19.56	120	360	1-5/8	1-1/2 MNPT	5025
	20,STD,40S	GSST-I-R-2000-04S	18.88	18.94 - 19.68	0.375	427	19.56	120	415	1-5/8	1-1/2 MNPT	4275
	30,XS,80S	GSST-I-R-2000-08S	18.63	18.69 - 19.43	0.375	415	19.56	120	375	1-5/8	1-1/2 MNPT	4500
	40	GSST-I-R-2000-040	18.44	18.50 - 19.24	0.375	409	19.56	120	350	1-5/8	1-1/2 MNPT	5250
	60	GSST-I-R-2000-060	18.00	18.06 - 18.80	0.375	391	19.56	120	340	1-5/8	1-1/2 MNPT	5375
	80	GSST-I-R-2000-080	17.56	17.63 - 18.36	0.375	336	18.30	120	330	1-5/8	1-1/2 MNPT	5475
	100	GSST-I-R-2000-100	17.06	17.13 - 17.86	0.375	320	18.30	120	320	1-5/8	1-1/2 MNPT	5625
	120	GSST-I-R-2000-120	16.63	16.69 - 17.43	0.375	305	18.30	120	310	1-5/8	1-1/2 MNPT	5750
	140	GSST-I-R-2000-140	16.13	16.19 - 16.93	0.375	279	18.42	120	400	1-5/8	1-1/2 MNPT	5950
160	GSST-I-R-2000-160	15.69	15.75 - 16.49	0.375	265	18.42	120	390	1-5/8	1-1/2 MNPT	5975	
24	10,10S	GSST-I-R-2400-01S	23.13	23.19 - 23.93	0.375	653	20.36	120	465	1-5/8	1-1/2 MNPT	3700
	20,STD,40S	GSST-I-R-2400-04S	22.88	22.94 - 23.68	0.375	635	20.36	120	510	1-5/8	1-1/2 MNPT	3600
	XS,80S	GSST-I-R-2400-08S	22.63	22.69 - 23.43	0.375	625	20.36	120	465	1-5/8	1-1/2 MNPT	3675
	30	GSST-I-R-2400-030	22.50	22.56 - 23.30	0.375	626	20.36	120	450	1-5/8	1-1/2 MNPT	3725
	40	GSST-I-R-2400-040	22.25	22.31 - 23.05	0.375	608	20.36	120	445	1-5/8	1-1/2 MNPT	3650
	60	GSST-I-R-2400-060	21.69	21.75 - 22.49	0.375	585	20.36	120	435	1-5/8	1-1/2 MNPT	3825
	80	GSST-I-R-2400-080	21.19	21.25 - 21.99	0.375	518	19.56	120	425	1-5/8	1-1/2 MNPT	4375
	100	GSST-I-R-2400-100	20.56	20.63 - 21.36	0.375	492	19.56	120	410	1-5/8	1-1/2 MNPT	4500
	120	GSST-I-R-2400-120	20.00	20.06 - 20.80	0.375	468	19.69	120	395	1-5/8	1-1/2 MNPT	5250
	140	GSST-I-R-2400-140	19.50	19.56 - 20.30	0.375	450	19.81	120	385	1-5/8	1-1/2 MNPT	5100
160	GSST-I-R-2400-160	18.94	19.00 - 19.74	0.375	428	19.94	120	375	1-5/8	1-1/2 MNPT	5125	

\* Larger sizes and custom configurations available upon request. • NPS 6-24 TOOL OD MUST BE WITHIN 1/8" CONCENTRICITY TO THE PIPE ID.

(P-XXXX) - When testing in ANSI A106 Grade B pipe material, a Pipe Reinforcement Device (PRD) is required if the test pressure will exceed the number identified after the "P-". If the material is not A106 B, consult USA Industries engineering team for more information.  
In general, a PRD is strongly recommended for all pipes 10/10S and thinner walled.

• NEVER EXCEED THE MAXIMUM RATED PRESSURE OF THE LOWEST RATED COMPONENT IN THE SYSTEM.

• DATA IS SUBJECT TO CHANGE. Consult manufacturer to verify that this document is the latest release.

For more information on USA Industries' products, contact us at (713) 941-3797 or go to [www.USAIindustries.com](http://www.USAIindustries.com)

