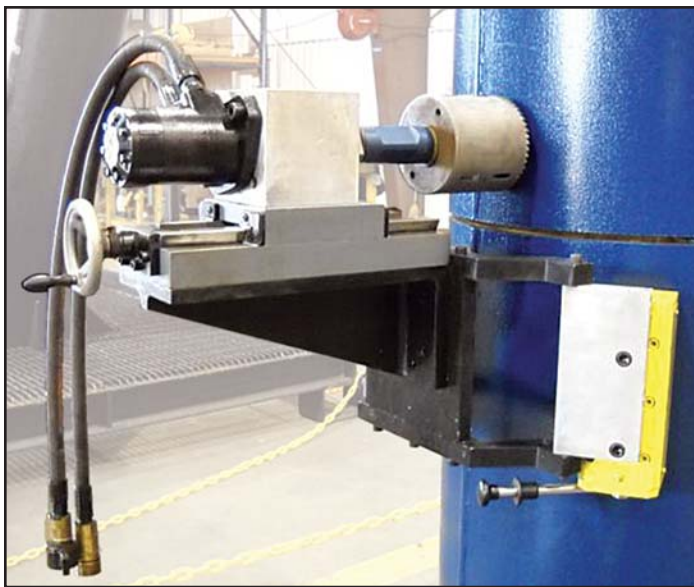


DUAL MAGNET DRILL

MACTECH PORTABLE MACHINING SOLUTIONS

Portable Drill Cuts Large Holes in Casing, Structure and Decks

The **Mactech Dual Magnet Drill** has the power and portability for drilling large rigging and vent holes in casing, structure and decks. The precision slide and bracket assembly provides an extremely rigid platform for the most demanding drilling jobs. The powerful motor can easily cut through the toughest casing and aggregate. Super strong rare earth magnets provide a secure and stable base that can be mounted on any ferrous surface.



Mactech Dual Magnet Drill

Features

- Drills up to 8 inch holes through the toughest materials
- Hydraulic or pneumatic power
- Uses standard drill bits, hole saws and end mills
- Strong rare earth magnets attach to any ferrous surface
- Standard 1 inch straight quill
- Mounting arms for curved or flat surfaces



📍 KASI Technologies Inc. 125 – 3001 Buckingham Drive, **Sherwood Park**, AB T8H 0X5

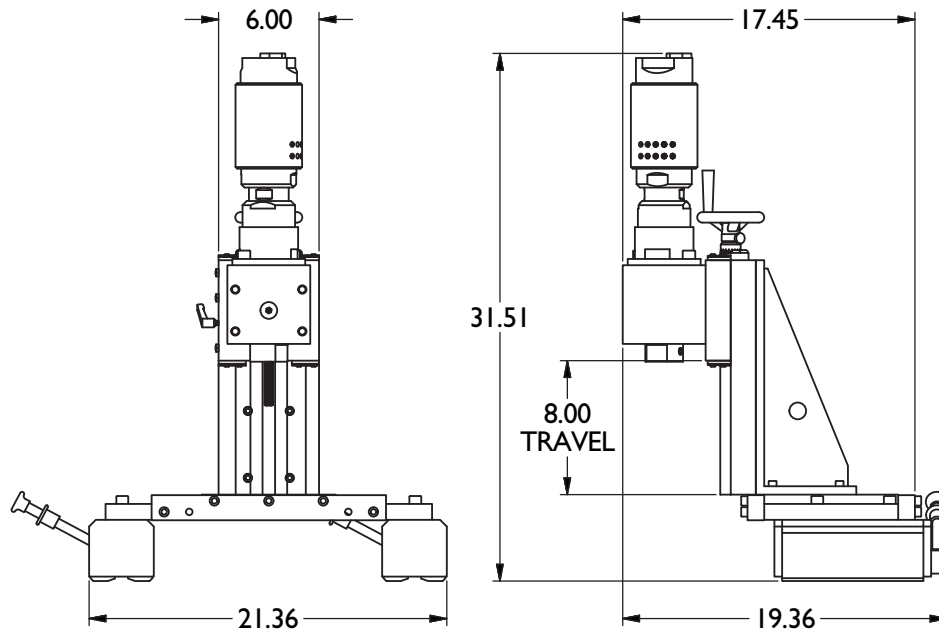
☎ Call Us: +1-780-440-1749 / Toll-free: +1 855-KASI-CAN

✉ sales@kasi.ca

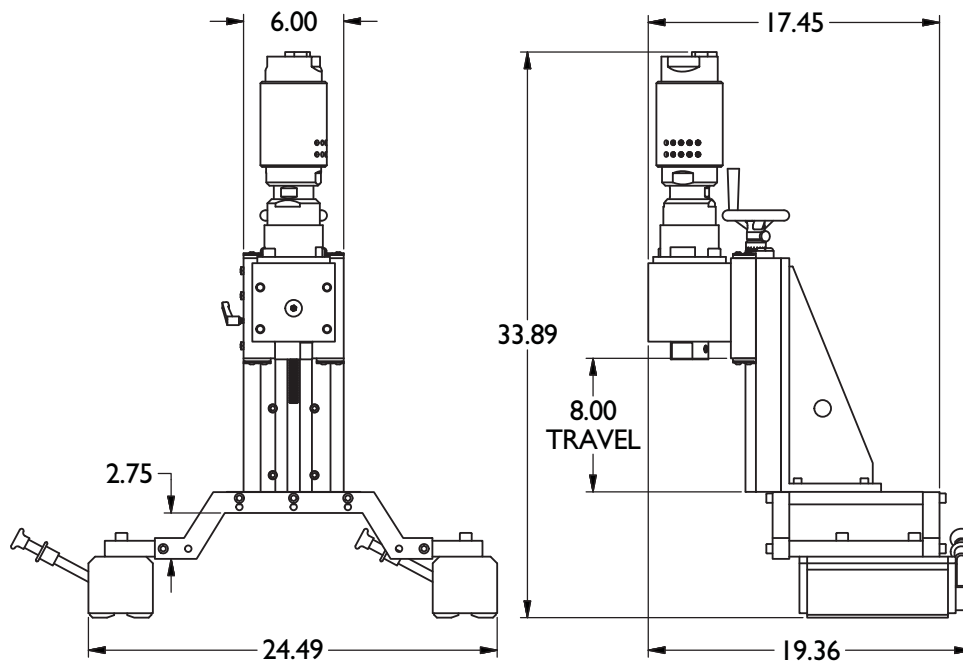
DUAL MAGNET DRILL

MACTECH PORTABLE MACHINING SOLUTIONS

Dual Magnet Drill with Air Motor



with Flat Mounting Bar



with Raised Mounting Bar

📍 KASI Technologies Inc. 125 – 3001 Buckingham Drive, **Sherwood Park**, AB T8H 0X5

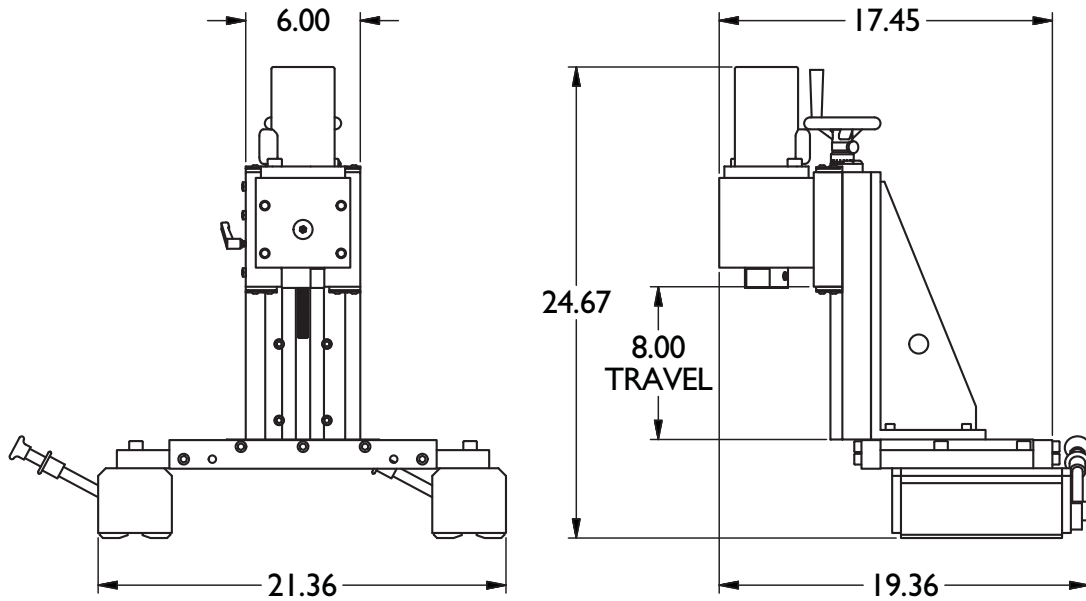
☎ Call Us: +1-780-440-1749 / Toll-free: +1 855-KASI-CAN

✉ sales@kasi.ca

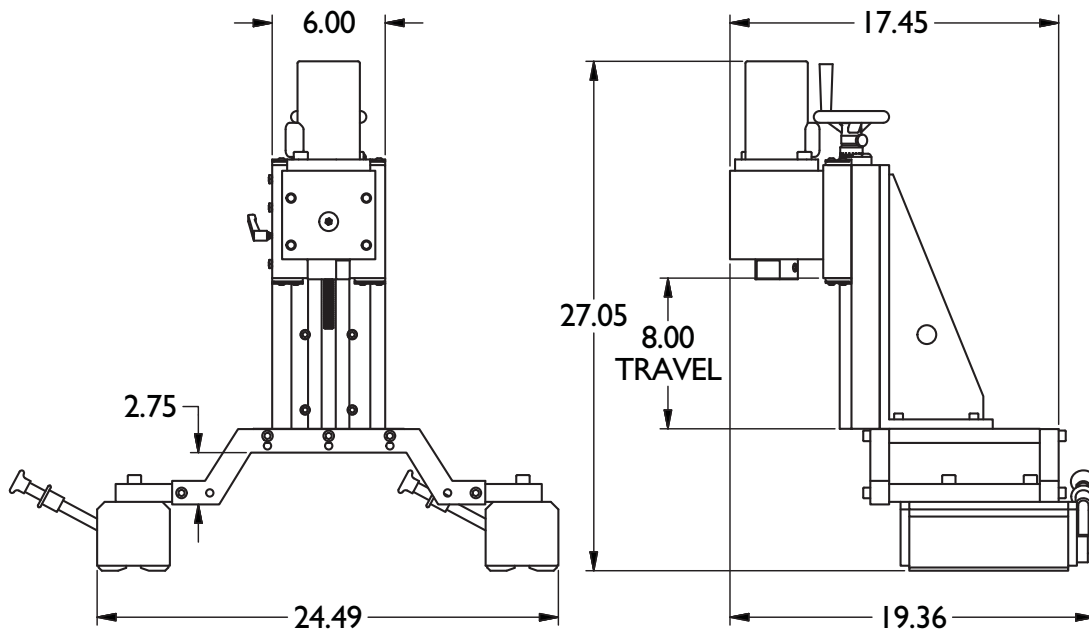
DUAL MAGNET DRILL

MACTECH PORTABLE MACHINING SOLUTIONS

Dual Magnet Drill with Hydraulic Motor



with Flat Mounting Bar



with Raised Mounting Bar

📍 KASI Technologies Inc. 125 – 3001 Buckingham Drive, **Sherwood Park**, AB T8H 0X5

📞 Call Us: +1-780-440-1749 / Toll-free: +1 855-KASI-CAN

✉ sales@kasi.ca

DUAL MAGNET DRILL

MACTECH PORTABLE MACHINING SOLUTIONS

Specifications

Drill Capacity: Up to 8 inch (203mm) diameter holes.

Tool Shank: 1 inch straight quill standard

Tool Travel: 8 inches (203mm)

Mounting Options: Flat or curved surfaces, flat or raised mounting bar options

Maximum Magnet Holding Capacity: 2200 lbs (998kg) flat surface, 1100 lbs (499kg) curved surface.
Magnet attaches to any clean ferrous surface.

Operating Weight

Drill with Air Motor, Raised Mounting Bar: 211 lbs (96kg)

Drill with Air Motor, Flat Mounting Bar: 213 lbs (97kg)

Drill with Hydraulic Motor, Raised Mounting Bar: 203 lbs (92kg)

Drill with Hydraulic Motor, Flat Mounting Bar: 201 lbs (91kg)

Drive Motor

Air

Port: 1/2 NPTF

Maximum Output: 3.84 hp (2.86kW)

Speed at Maximum Output: 87 rpm

Torque at Maximum Output: 231 ft-lbs (314N-m)

Minimum Starting Torque: 347 ft-lbs (471N-m)

Free Speed: 174 rpm

Air Consumption at Maximum Output: 116 cfm (55 lps)

Air Supply Requirements: 91 psi (6.3 bar)

Includes air caddy (air filter and oiler)

Hydraulic

Ports: 1/2 NPTF

Maximum Continuous Pressure: 1650 psi (114 bar)

Maximum Continuous Speed: 353 rpm

Maximum Continuous Torque: 2059 inch-lbs (233N-m)

Maximum Continuous Flow: 15 gpm (57 lpm)

Power Supply Requirements: 2 - 15 gpm (8 - 57 lpm), 1500 psi (103 bar)



📍 KASI Technologies Inc. 125 – 3001 Buckingham Drive, **Sherwood Park**, AB T8H 0X5

☎ Call Us: +1-780-440-1749 / Toll-free: +1 855-KASI-CAN

✉ sales@kasi.ca